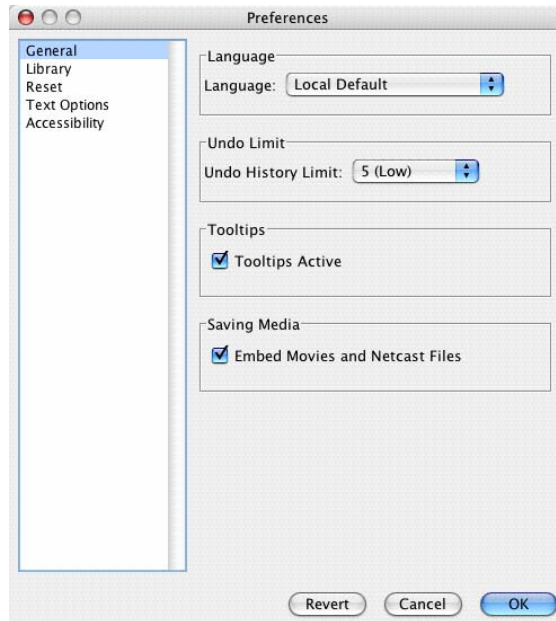


You can add and remove folders from the Library.

Go the WebBlender menu and choose Preferences.

You will see the Preferences dialog.



Click the Library item.

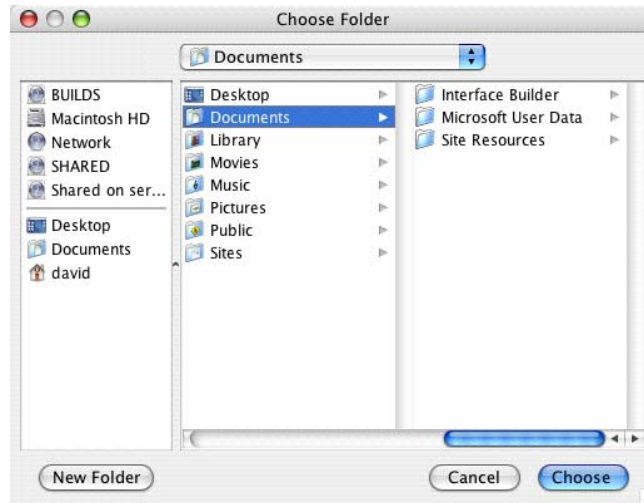


To turn off any of the standard Library folders, click the check box next to the folder name.



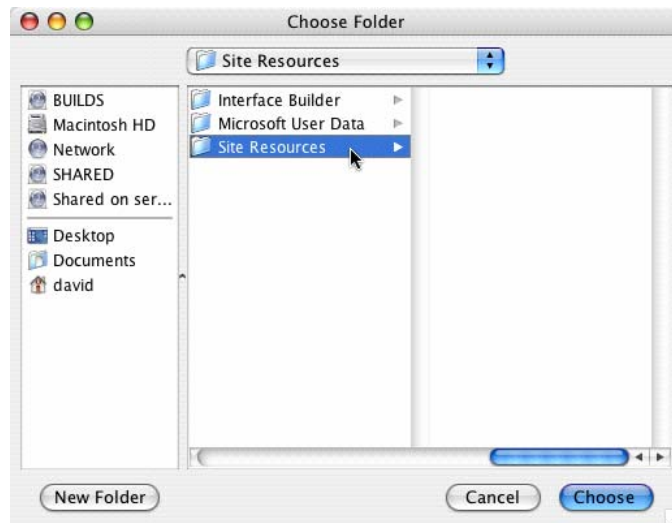
To add your own folder to the Library, click the Add button.

You will see the Choose Folder Dialog.



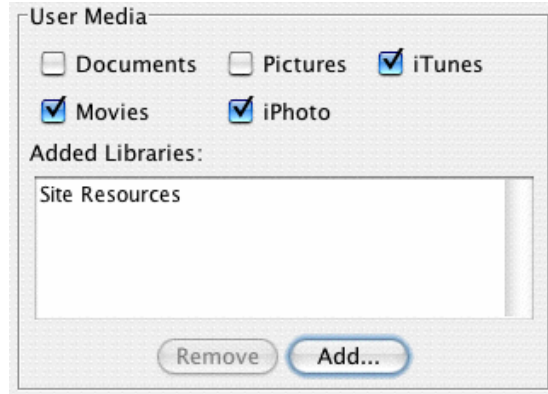
Locate the folder you want to add to the Library. Library folders can contain pictures, animated gif files, movies, and text (.txt) files.

Click the folder to select it.



Click the Choose button.

You will see the folder name in the Added Libraries list.



When you are finished, click the OK button.

Click the Library tab above the editing panel.



You will see the library folders in the editing panel. Your folder will be in the list.

